

# NEWSLETTER



September 2006

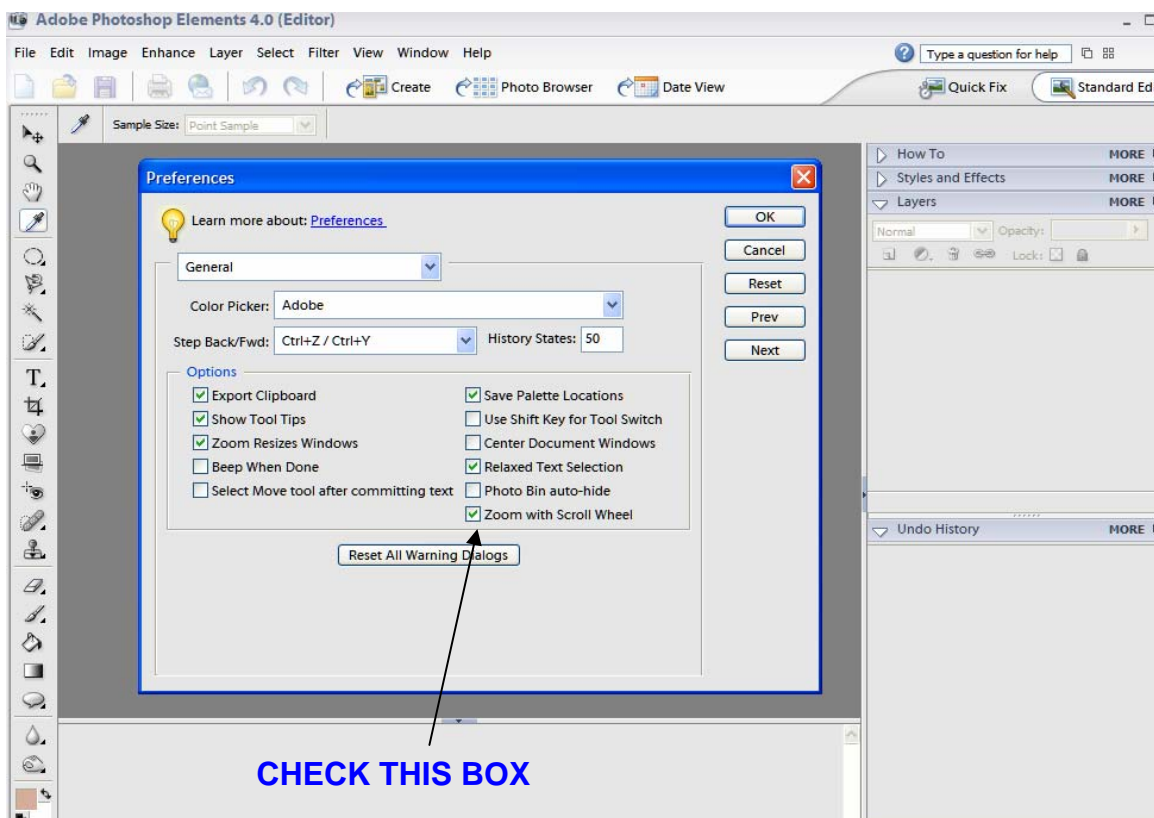
Thought I would try something new, a newsletter for the group with some tips, news and whatever!

## TIPS

### Preferences

Many users of Elements 4 (it isn't available in 3) haven't used or maybe even realized there are a lot of keyboard shortcuts that can be used in the program. However there is one shortcut that is often overlooked with the mouse and that is using the scroll wheel (if your mouse has one) to zoom in and out on the picture instead of clicking on the zoom tool and using the left click for in and alt click for out.

To set up the mouse go to Edit>Preferences>General and the screen shown below will appear.



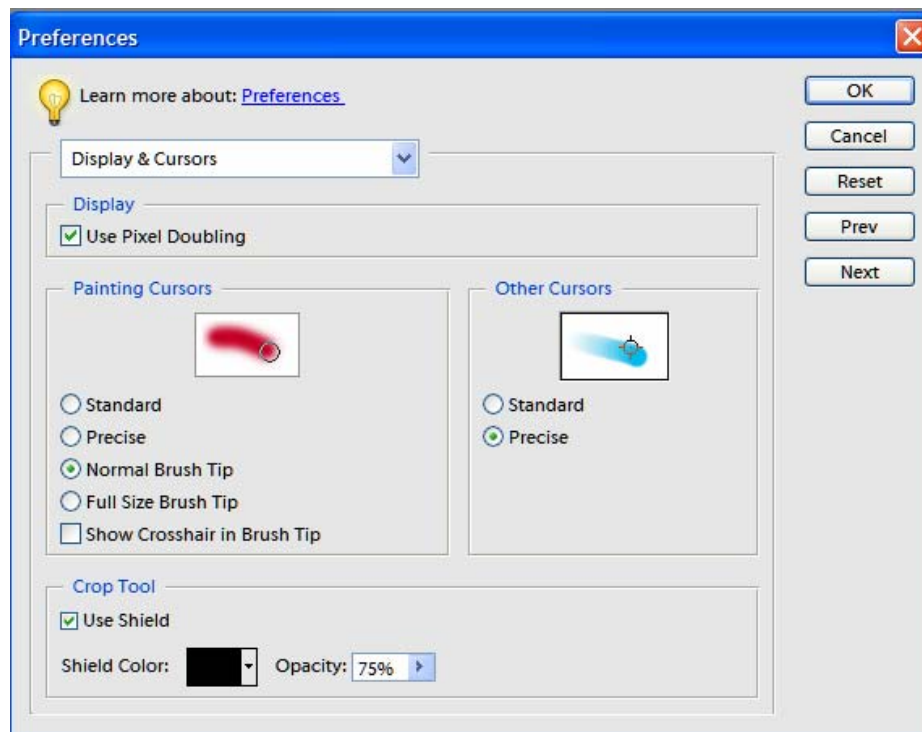
On the same subject of preferences you would expect to learn more about these by clicking on the hyper link in the preferences box. Of course you won't find any information about the box you are viewing that would be far too simple for Adobe!

Instead you are greeted with this window:

## To set Photo Browser viewing preferences

1. In the Photo Browser, choose Edit > Preferences > General.
2. Specify options as desired, such as the following:
  - To order pictures within a day so that the newest pictures appear first, choose Show Newest First Within Each Day.
  - To rescale photos more than 100% of actual size, to the maximum size for the space available, select Allow Photos To Resize. Deselect this option to display small images at their actual size even when more space is available for display.
  - To display the file name of each photo with other details in the Photo Browser, select Show File Names In Details.
  - To reenable dialog boxes that you'd chosen not to display again, click Reset All Warning Dialogs.

What that has to do with editing I am not quite sure but fortunately the preferences are quite self explanatory with one exception, in the preferences for Displays and Cursors this is the box:



Notice the “Use Pixel Doubling” option in the display preferences panel. I could not find any reference to this in the help menu and none of the books I have on Elements even mentions this. After much digging around on the web I found this reference on a web forum:

QUOTE

The Use of the Pixel Doubling preference option speeds up the preview of a tool or command's effects by temporarily doubling the size of the pixels (halving the resolution) in the preview. This option has no effect on the pixels in the file; it simply provides faster previews with the tools and commands.

UNQUOTE

I have tried it and although I cannot say for sure previews do seem to show up faster but then it might just be my imagination! My thought is that it can't hurt to have it checked so why not?

## **New Font**

With the introduction of Office 2007 Microsoft are unveiling two new default fonts Calibri and Cambria.

Calibri is a new sans serif font meant to replace Arial I think. This is Calibri 12 point (the other text in this article is Arial 12 point). It is very clear and although it appears slightly smaller than Ariel it is very readable.

Cambria is a new serif font meant to replace Times New Roman .This is Cambria 12 point. It also is slightly smaller but very readable.

In Office 2007 Cambria is the default for headings and Calibri for body text. Of course they can be changed but I kind of like them.

The logo used on the first page was created in Xara software using the Calibri font.

If anyone would like to install them they are available on several web sites (do a Google on fonts) or you can e-mail me and I will send them to you.

## **Beta Software from Adobe**

From Peggy Johnson

Adobe just announced a beta edition (free) for their new software called “Lightroom”. This is a very sophisticated photo album aimed at professional photographers for sorting and cataloging multiple photographs. It appears to be in competition with Apples “Aperture” a similar program. No price has been set for this new software but for guidance Aperture cost around \$600.

The software can be downloaded at <http://labs.adobe.com/technologies/lightroom/?trackingid=IFQT>

# Microsoft Color Control Applet

From Lynn Oakleaf

This is part of the Power toys group for Windows. It can be downloaded for free at <http://www.microsoft.com/downloads/details.aspx?FamilyId=1E33DCA0-7721-43CA-9174-7F8D429FBB9E&displaylang=en>

It is not recommended for use with other color calibration software such as ColorVision, X-Rite etc.

## Overview

The Microsoft Color Control Panel Applet adds a new 'Color' item to the Windows control panel, providing a single place to view and edit color management settings in Windows XP. Using it, you can install and uninstall color profiles, change color profile associations for displays, printers and scanners, view detailed properties for color profiles (including a 3D rendering of the color space gamut), and rename color profiles, keeping the filenames and "internal" names consistent.

This tool also enables Windows to automatically adjust the gamut curve of the display when a color profile containing gamut table information is set as the default profile for the display. Typically, such profiles are created by custom monitor calibration tools, such as those available from ColorVision, GretagMacbeth, and X-Rite. If a color profile has this information, it is shown with an asterisk (\*) in the user interface.

Using the Microsoft Color Control Panel Applet, you can:

- Install and uninstall ICC color profiles
- Inspect, rename, and compare two different color profiles
- View a 3D graphics plot of color profile color gamuts
- Associate color profiles with devices such as printers, monitors, and scanners
- Apply custom color gamut adjustments to one or more displays "on the fly"
- Set up display calibration reminders at intervals you specify

I downloaded the program, after disabling Microsoft.NET Framework and reinstalling it. There was an error code 1603 when I started the install and after jumping through numerous hoops I was able to get it to work. As I already have ColorVision on my desktop I don't need another color profile setting but if you read the attached blurb from Microsoft there is a lot of potential for this product if (and it is a big if) you understand the information generated.

For me there is a plus it has a feature to remind you to calibrate your monitor no matter what calibration system you use so I have set the program to bug me every 14 days!