

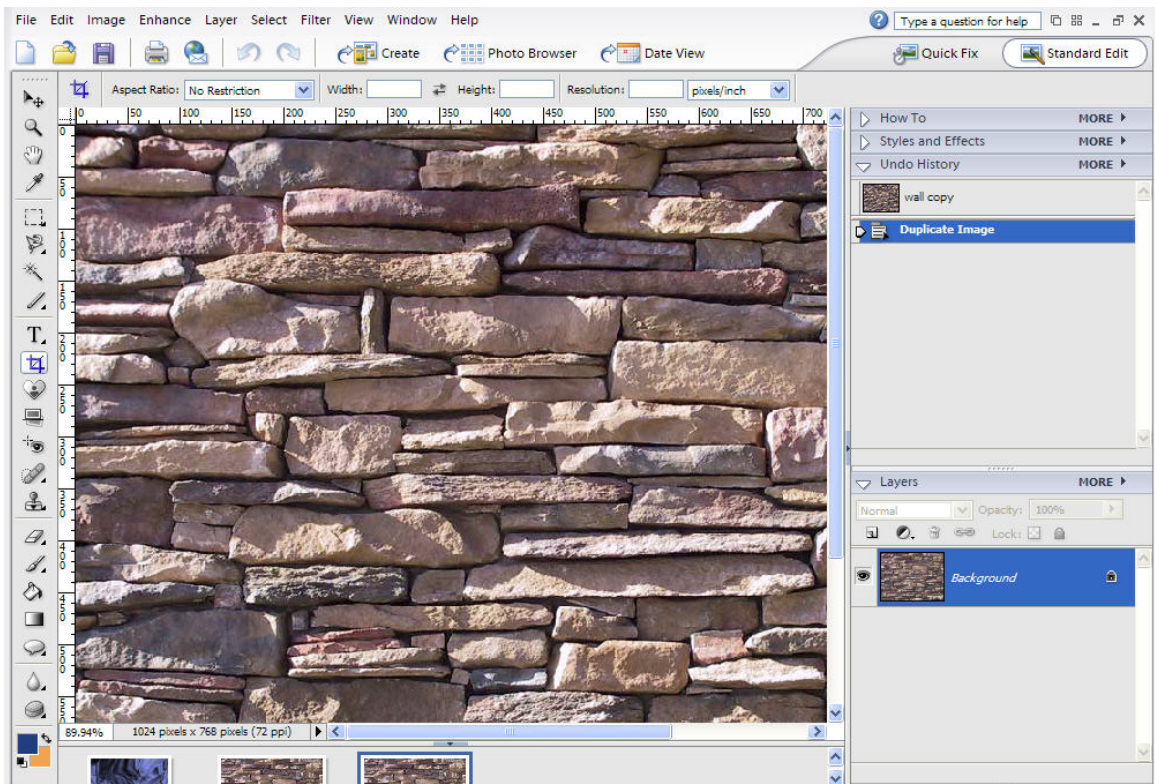
CREATING DISPLACEMENT ART PICTURES

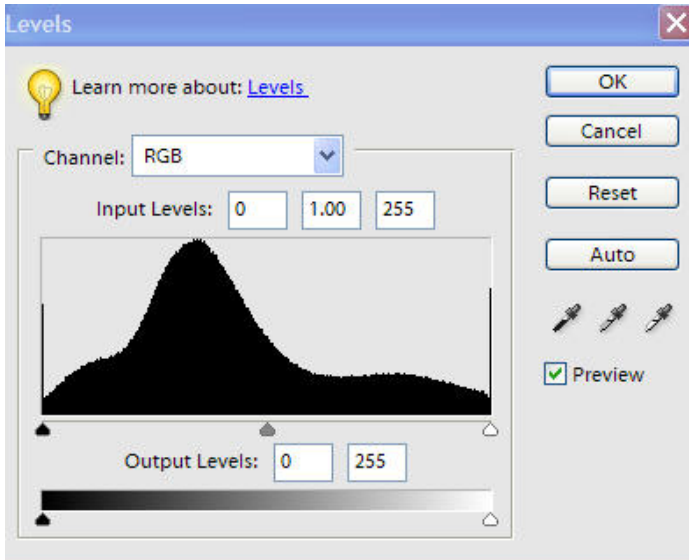


We covered this subject at one of our meetings when I showed how to “paint” a vehicle with a flag (see image). However I did not write up a tutorial. Here is how we displace art onto another image.

This technique is great for tasks like adding art to a shirt in an image or putting an image onto a wall to make it look like it was painted on. That is what we are going to do in this tutorial, place a British flag onto a brick wall.

First open the images in PhotoShop and with the wall image active go File >Duplicate to make a copy of it (See below).





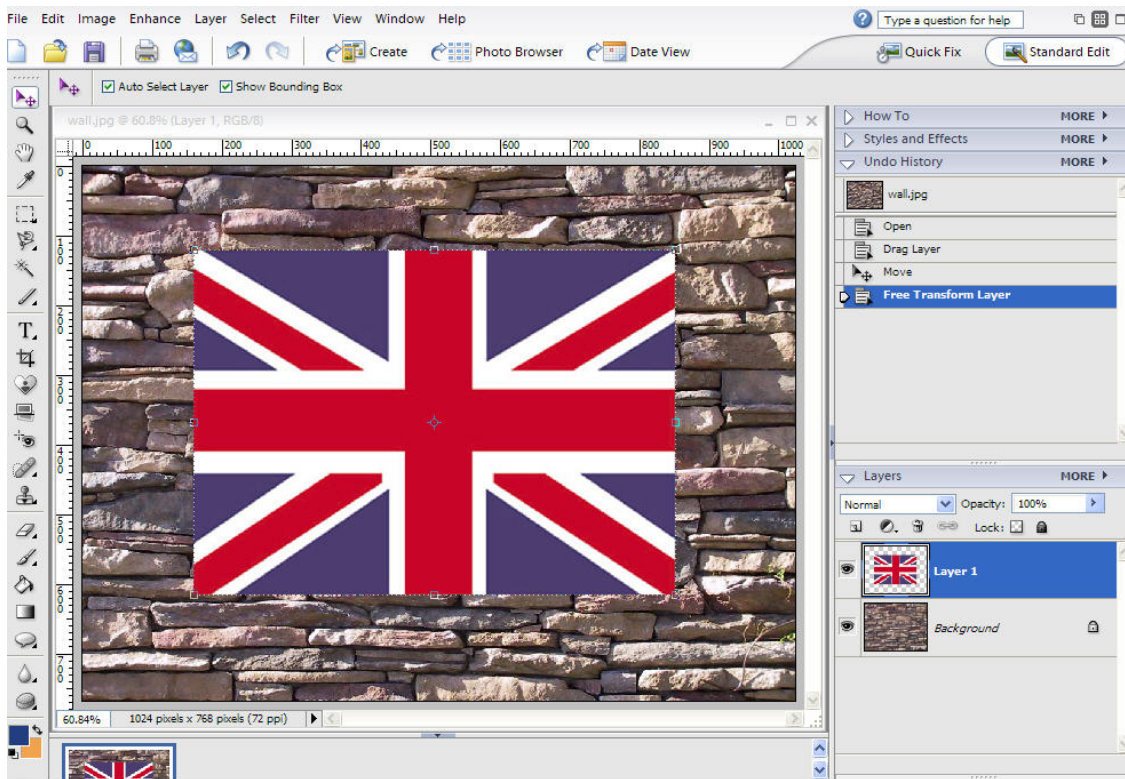
With the duplicate selected open the levels Enhance>Adjust Lighting > Levels or Ctrl>L. Boost the contrast on the photo by dragging the highlights slider and the shadows slider towards the middle.

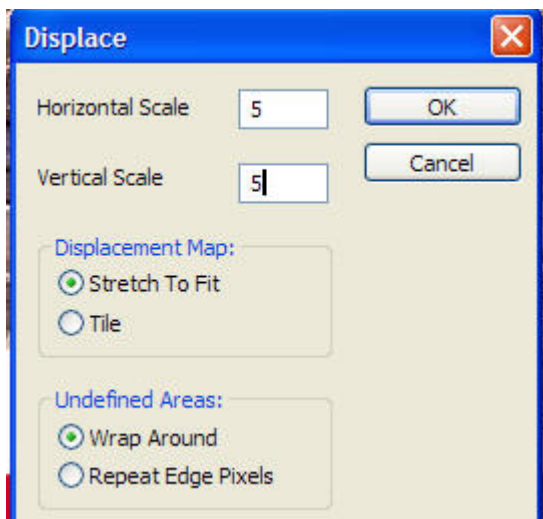
Now go to Image >Mode>Grayscale to take the color out of the image. When asked if you want to discard the color information click yes.

Now go to Filter>Blur>Gaussian and set the blur between 3 and 4 pixels. This is not essential but displacement maps work better if they are blurred. Save the

file as a .psd file, this is your displacement map, you will need it later.

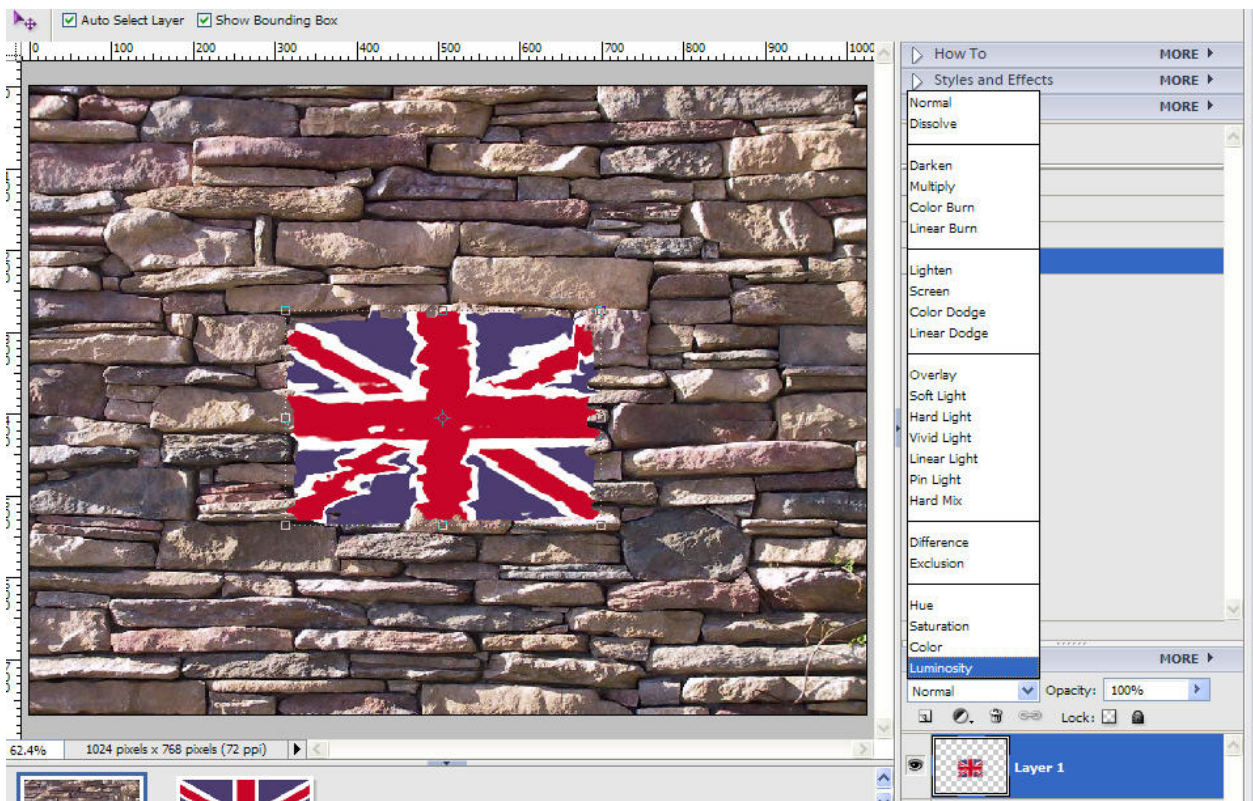
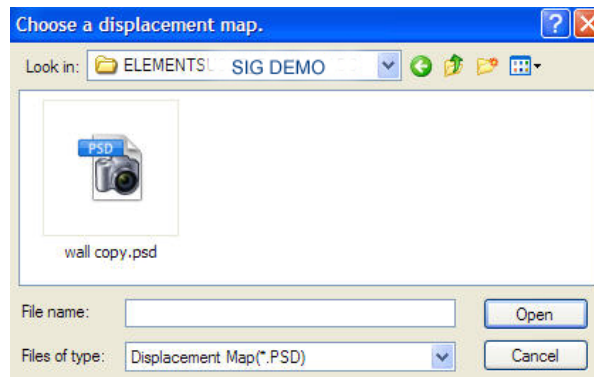
Now open the original wall picture and the flag together in the workspace and with the flag picture active use the move tool (V) drag the flag into the wall picture. (See below). The flag is now layer 1 in the layers palette.



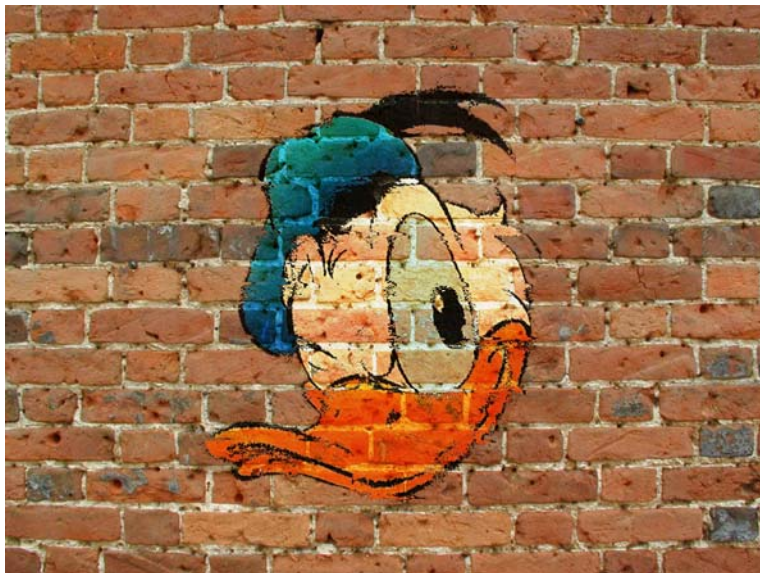
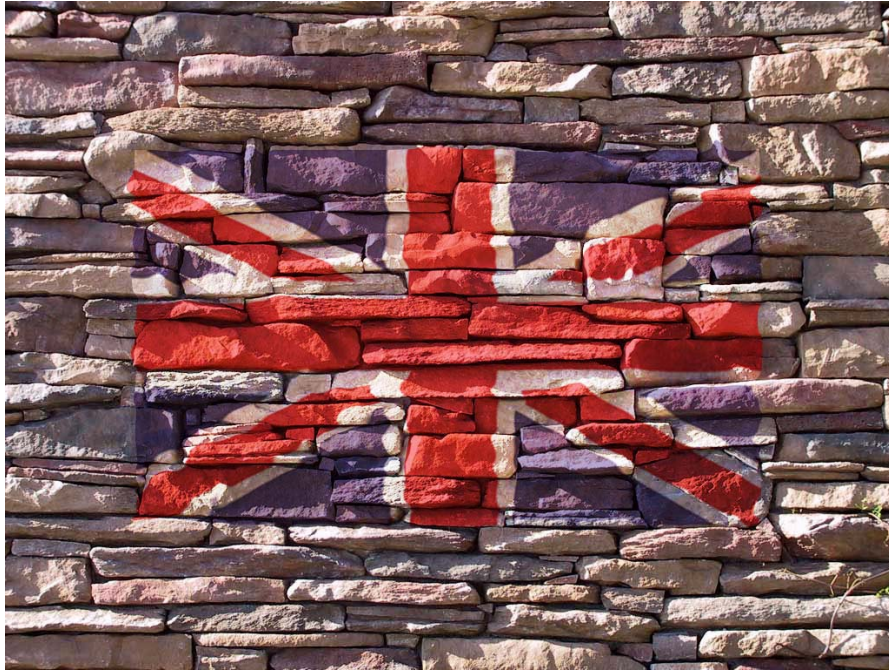


This is where we apply the displacement to the flag. Click on the layer 1 to make it active and select Filter>Distort>Displace. In the box that appears (see at right) check the Stretch to Fit and Wrap Around boxes and set the scale to 5% in this case. This is up to the picture I found 5% worked in this case but at the end of the tutorial I show a picture where 10% worked. Play with these settings to find which you like. When you click OK the dialog box appears for choosing your displacement map (see image at right).

Browse to where you saved the wall picture as a .psd and open it. You will see the distortion immediately but it will probably look very garish (see below).



To alleviate this in the layers palette change the blend mode from Normal to Multiply. The menu is shown in the picture above, multiply is the fourth one down in the list. This darkens the image because it removes the white from that layer. Now you can play with the opacity on the layer palette reducing it to about 30%. The flag is not very visible now but we will correct that. With the flag layer still selected choose Layer>Duplicate and on this layer set the blend mode to Overlay. Now again play with the opacity setting for this layer until you have a satisfactory image. The end result should be a high contrast flag carved into a brick wall. (See below).



Here is another image with the displacement set to 10% as mentioned above.

Remember you can use this technique for many things including putting your own portrait on a building or vehicle. Let your imagination run wild!